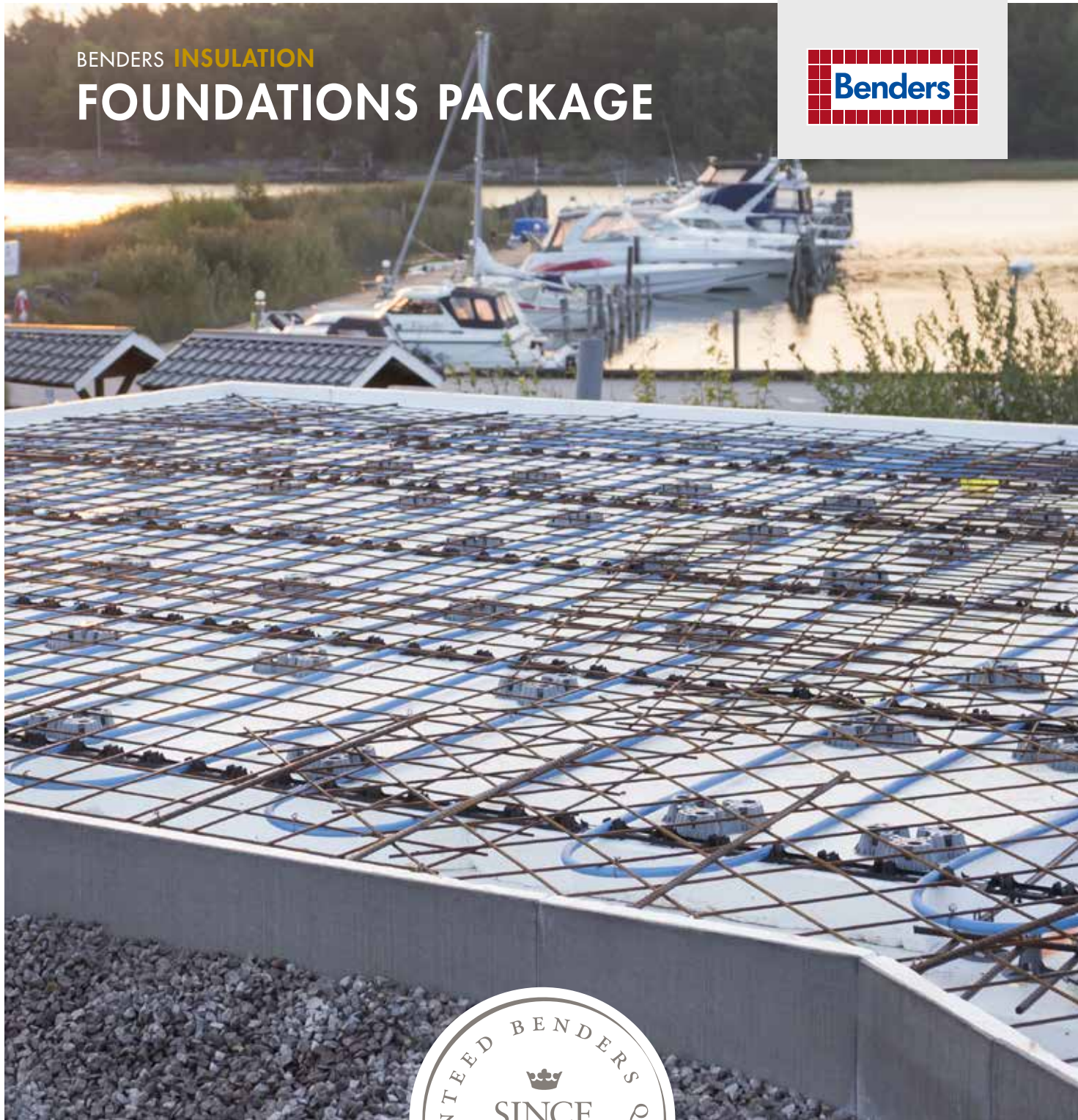


BENDERS INSULATION

FOUNDATIONS PACKAGE



The natural choice

More about Benders
www.benders.se/en-gb

EXPERTISE AND TRADITIONS

far beyond the factory walls

CUSTOMER IN THE CENTRE

Ever since starting in 1960, our clear ambition has been to satisfy customer needs. We are keen to believe that this underlying philosophy has strongly contributed to Benders now being one of the Nordic countries' leading suppliers of concrete and natural stone products for the construction and civil engineering sector. Our European presence is constantly increasing and, with a workforce of approximately 900, we have a turnover of around SEK two billion. Our operations are permeated by a local presence and a local responsiveness to the business climate. This provides the foundations for long and strong relations with customers and suppliers alike.

BUSINESS IDEA, VISION AND STRATEGIES

Our idea is to develop, produce and market competitive, high-quality products and services for buildings and other structures that contribute to the long-term sustainability of an environment in which people live, work and socialise. Our customer relations shall be built on a long-term commitment in which great value is placed on knowledge of the industry, experience and personal service. Benders shall combine experience and expertise with inquisitiveness as regards new trends. We shall always be one step ahead in developing new products. To create tomorrow's best products, we shall develop along with our customers.

A COMPLETE SUPPLIER FOR OUTDOOR ENVIRONMENTS

Over the years, Benders has devoted itself to intensive product development. Our ranges have constantly widened and are now so comprehensive that we can proudly call ourselves a complete turnkey supplier for both private and public projects. However, we hope that you will see us as an inquisitive sounding board and a committed partner. If you have a problem that needs solving, we are only too happy to help. Our goal is that you should never need more than one supplier.

MORE INFORMATION AT WWW.BENDERS.SE/EN-GB

We have more to offer. On our website, you will find the wide ranges in each of our product areas. These are roofing, landscaping, natural stone, infrastructure, insulation and walling. Our website is also where you will find user instructions, inspirational photographs, contact details (of our representatives and distributors), all our catalogues/ brochures and much more. You can even search in linked PDF files.



EVERYTHING IN A SINGLE PACKAGE

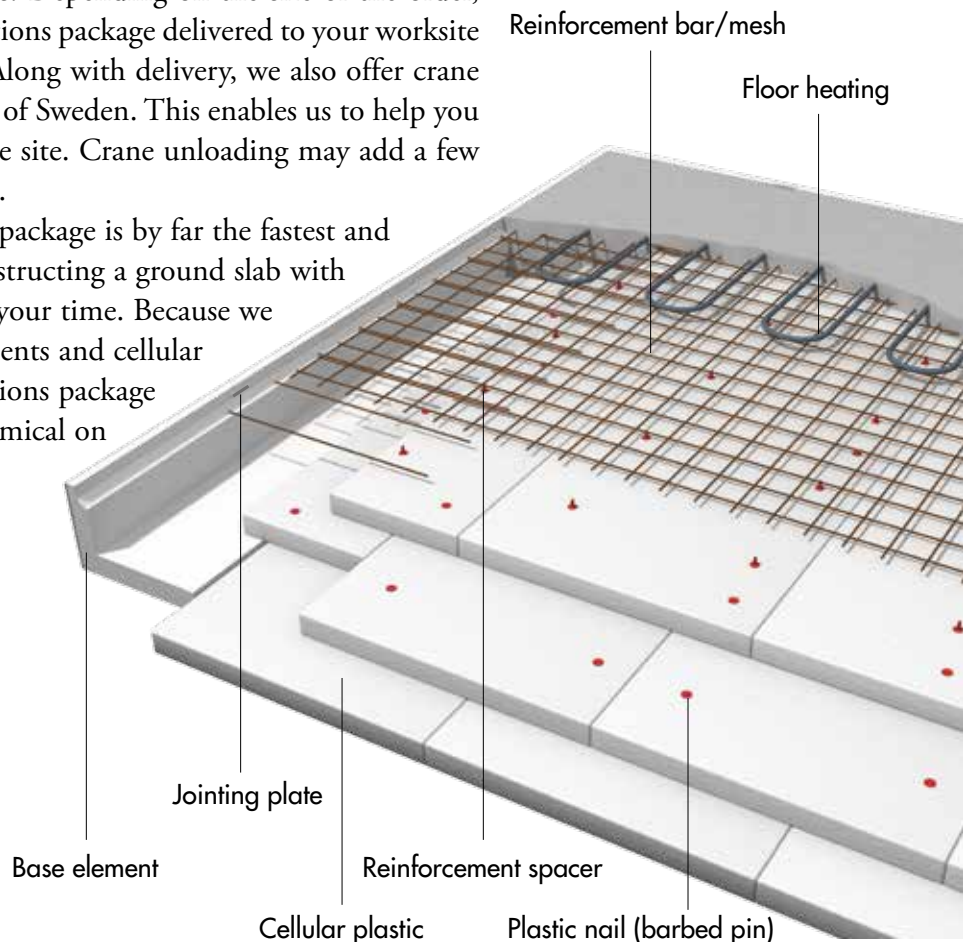
- ECONOMICAL
- WE CALCULATE QUANTITIES FROM DRAWINGS
- DELIVERY DIRECT TO THE WORKSITE IN 3-4 DAYS
- MAXIMUM SAVING OF YOUR TIME

WE ALSO OFFER CONSTRUCTION DRAWINGS

Benders' foundations package has been developed to ease the workloads of contractors and builders. Send us your drawing and we will return a quotation complete with calculated quantities and general drawings. Depending on the size of the order, you can have the foundations package delivered to your worksite in 3 – 4 working days. Along with delivery, we also offer crane unloading in many parts of Sweden. This enables us to help you set out the package at the site. Crane unloading may add a few days to the delivery time.

Benders' foundations package is by far the fastest and most flexible way of constructing a ground slab with the maximum saving of your time. Because we make our own base elements and cellular plastic, Benders' foundations package is one of the most economical on the market.

FAST AND FLEXIBLE





THE FOUNDATIONS PACKAGE INCLUDES

- BASE ELEMENTS
- CELLULAR PLASTIC
- REINFORCEMENT
- FLOOR HEATING
- ACCESSORIES

THE MARKET'S
ONLY CE MARKED
BASE ELEMENTS

BASE ELEMENTS

Benders' in-house manufactured **Base elements** have a 10 mm outer layer of fibre-reinforced concrete. They are ideal for constructing foundations with a rustic finish. The brushed surface adds life to the foundations and gives your building its unique charm. Our base elements are available in heights from 300 – 900 mm and in several load classes and thicknesses.



L-base element



L-base corner element



I-base element



U-base element



U-base corner element



Inner corner base element

PROCESS

- 1 YOU SEND US THE DRAWING OF YOUR PROJECT.
- 2 YOU RECEIVE OUR QUOTATION.
- 3 YOUR FOUNDATIONS PACKAGE IS DELIVERED DIRECTLY TO YOUR CHOSEN SITE.

CELLULAR PLASTIC

Benders' in-house manufactured, CE marked **Cellular plastic** has good insulation properties and can be delivered in all common dimensions and qualities. We can also supply graphite EPS and deliver XPS as well as PIR. Contact your representative for more information.



Expanded polystyrene (EPS)
panels/sheets



REINFORCEMENT

Reinforcement is used to strengthen the concrete, distribute loads in slabs and haunches and reduce the risk of cracking. We can supply reinforcement in all common dimensions and formats.



Reinforcement bar



Reinforcement mesh

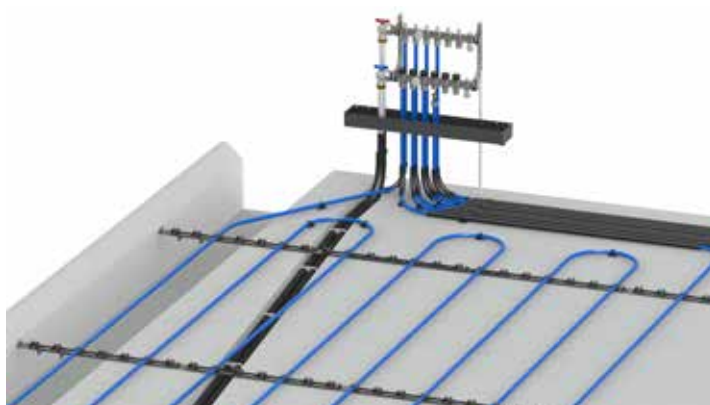


Reinforcement clamps



FLOOR HEATING

Floor heating is a convenient and valued investment that ensures a comfortable floor temperature for your building. Perfect for cold feet! When you choose a Benders' foundations package, we can work from your construction drawing and help you to devise a floor heating system customised to your project.

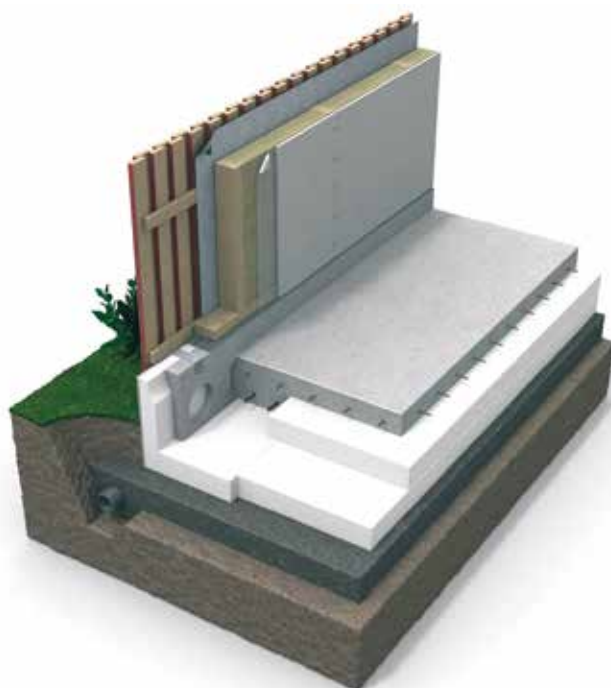


SILL BEAMS

Benders **Sill beams** are used in conjunction with L-base elements and provide a unique solution for a raised plinth above the poured floor. Using two fitting plates, it is easy to fit a sill beam to our base elements. When creating a plinth of up to 100 or 200 mm, our 400 and 500 mm L-base elements are a perfect match for our sill beam.



Sill beams



ACCESSORIES

We are particularly keen that you should be able to find **Accessories** specially developed for our products. Using our accessories ensures an excellent fit and quality.



Garage threshold plate
Used at the entrance to your garage to protect the edge of the concrete slab.



Serrated jointing plate
Used when joining base elements up to 500 mm high.



Maxi jointing plate
Used when joining base elements over 500 mm high.



Plastic nail
Used for joining cellular plastic slabs.



Insulation screw
Used for joining cellular plastic slabs on piled foundations.



Fitting plate
Used to hold the sill beam in place during pouring.



Can be used to join base elements and adjacent cellular plastic slabs on the foundation bed.



Reinforcement spacers
Used to position reinforcement bars at the right level.



Mesh spacers
Used to position reinforcement meshes at the right level.

Further details of the products in Benders' foundations package can be found on our website, www.benders.se/en-gb.



HEAD OFFICE

Benders Sverige AB
Box 20

SE-535 21 Kvänum

Offices: Edsvära

Tel: 010-888 00 00

Email: info@benders.se

Website: www.benders.se/en-gb

